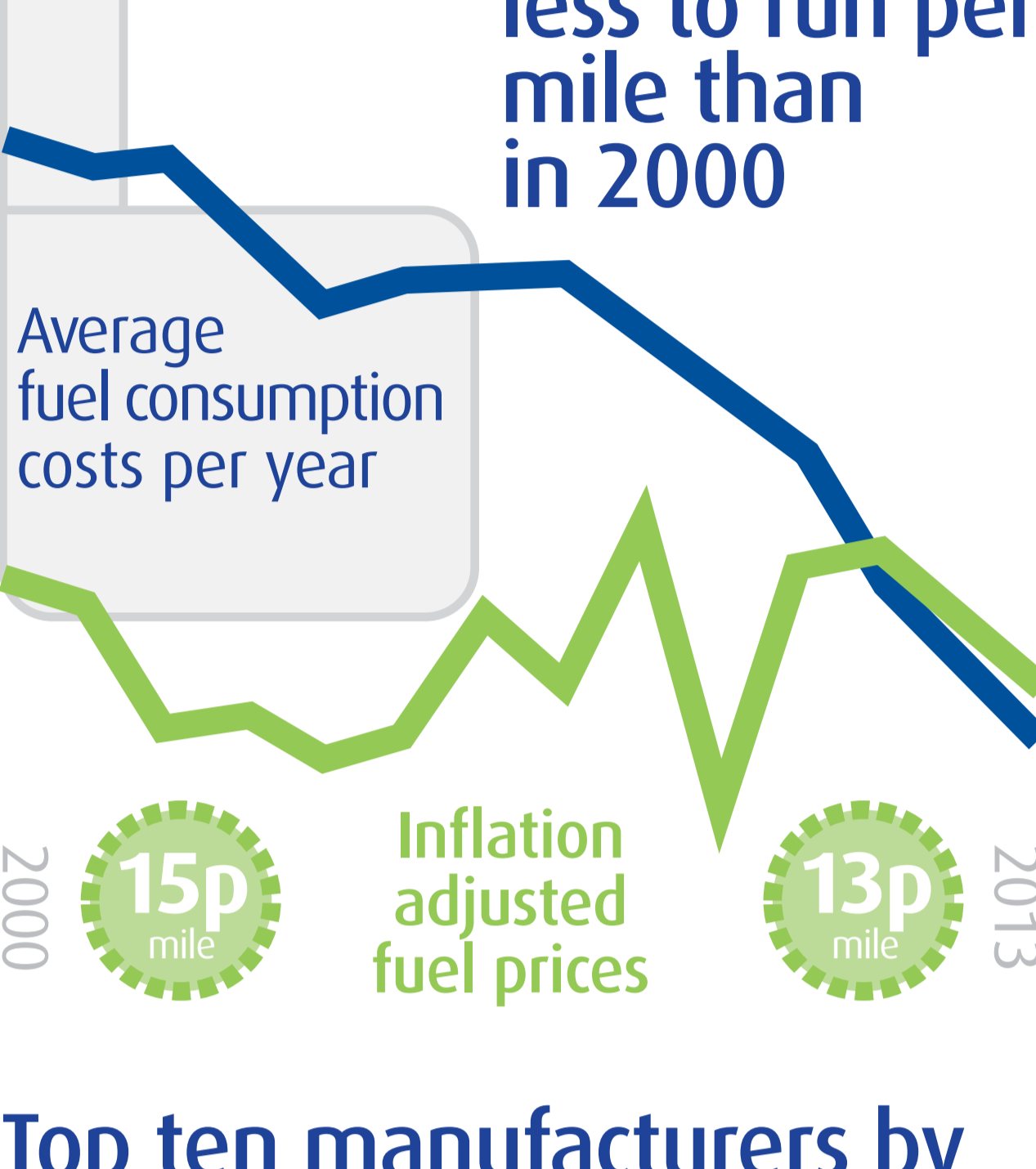
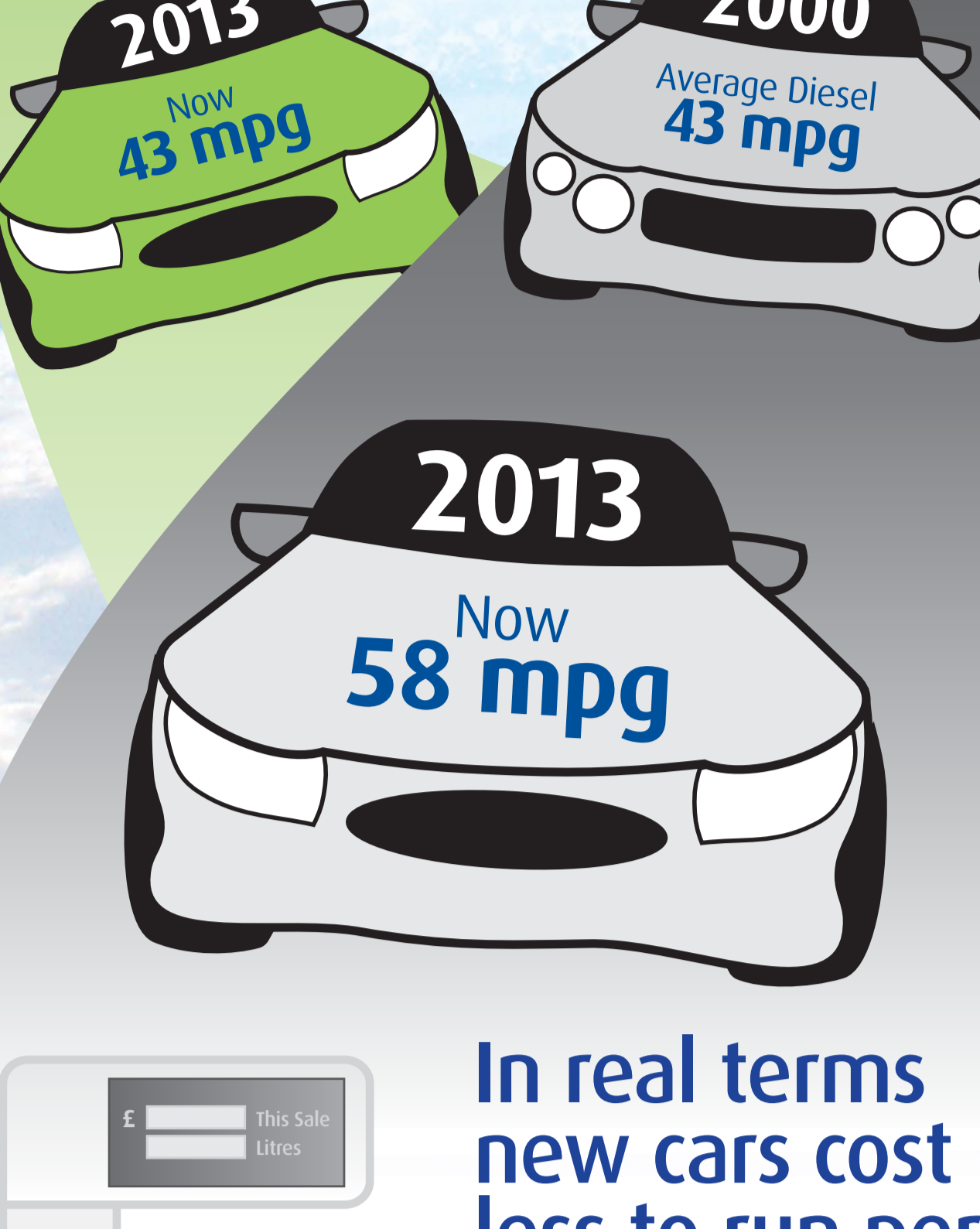
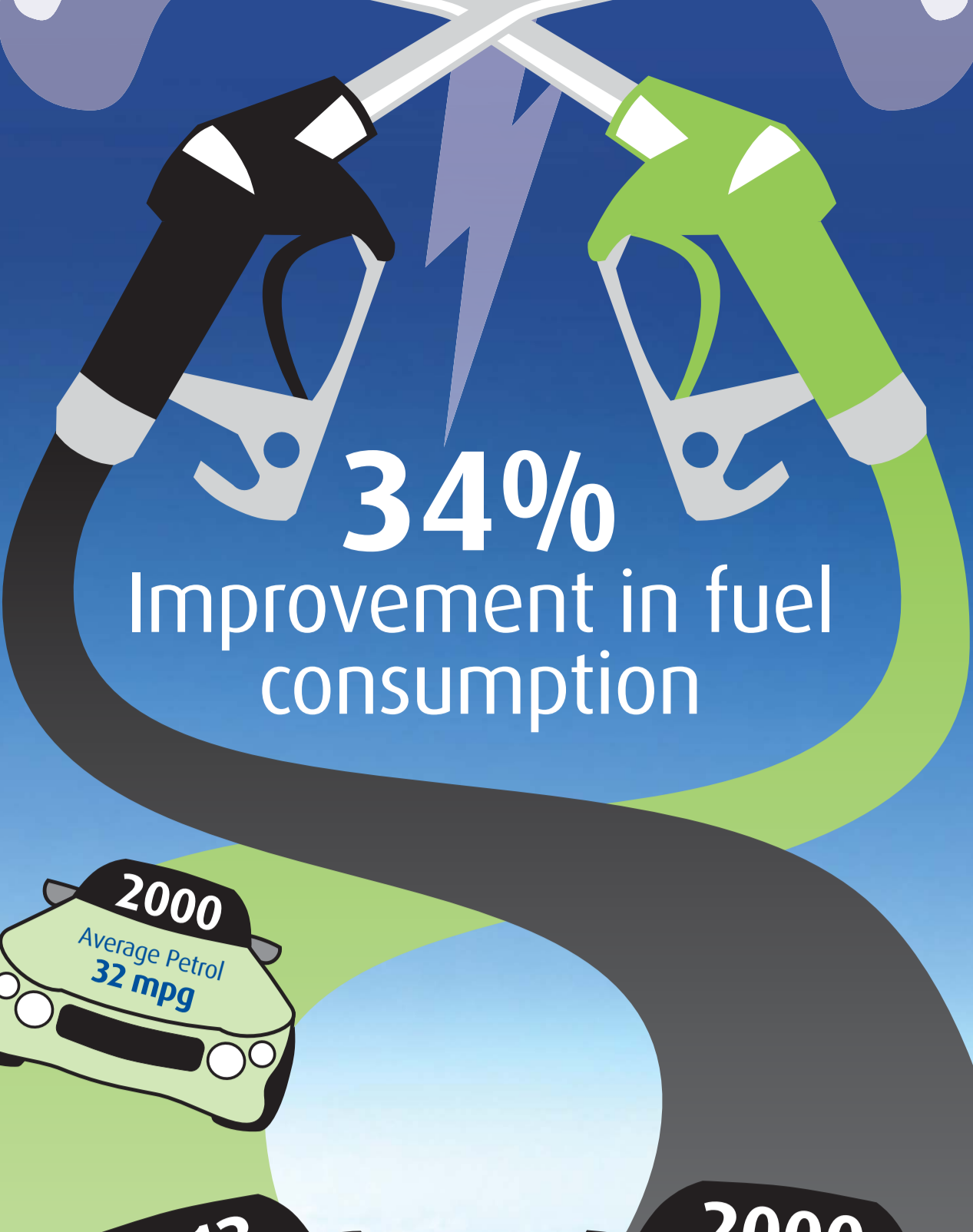
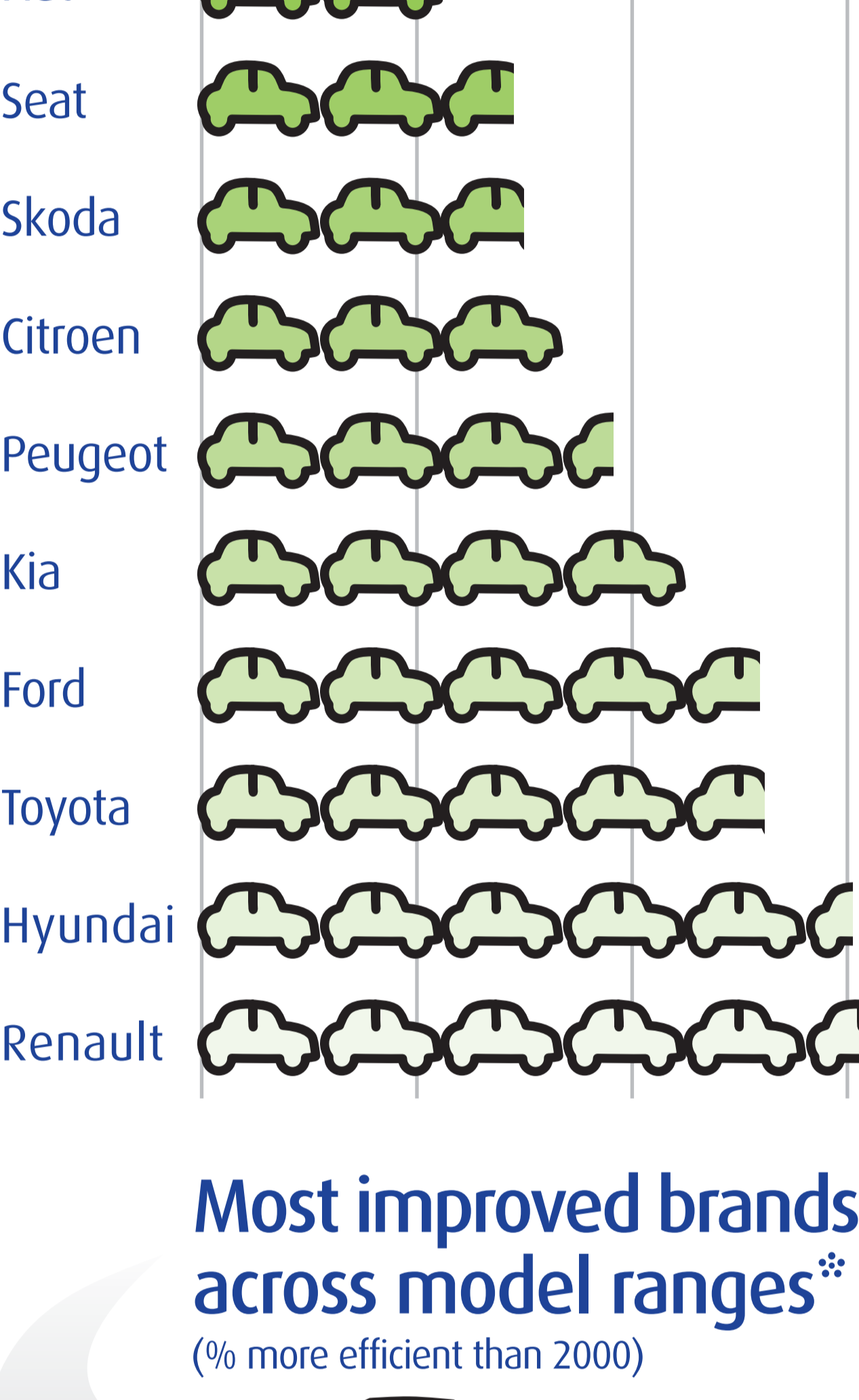


# UK Motoring Efficiency 2000 to 2013



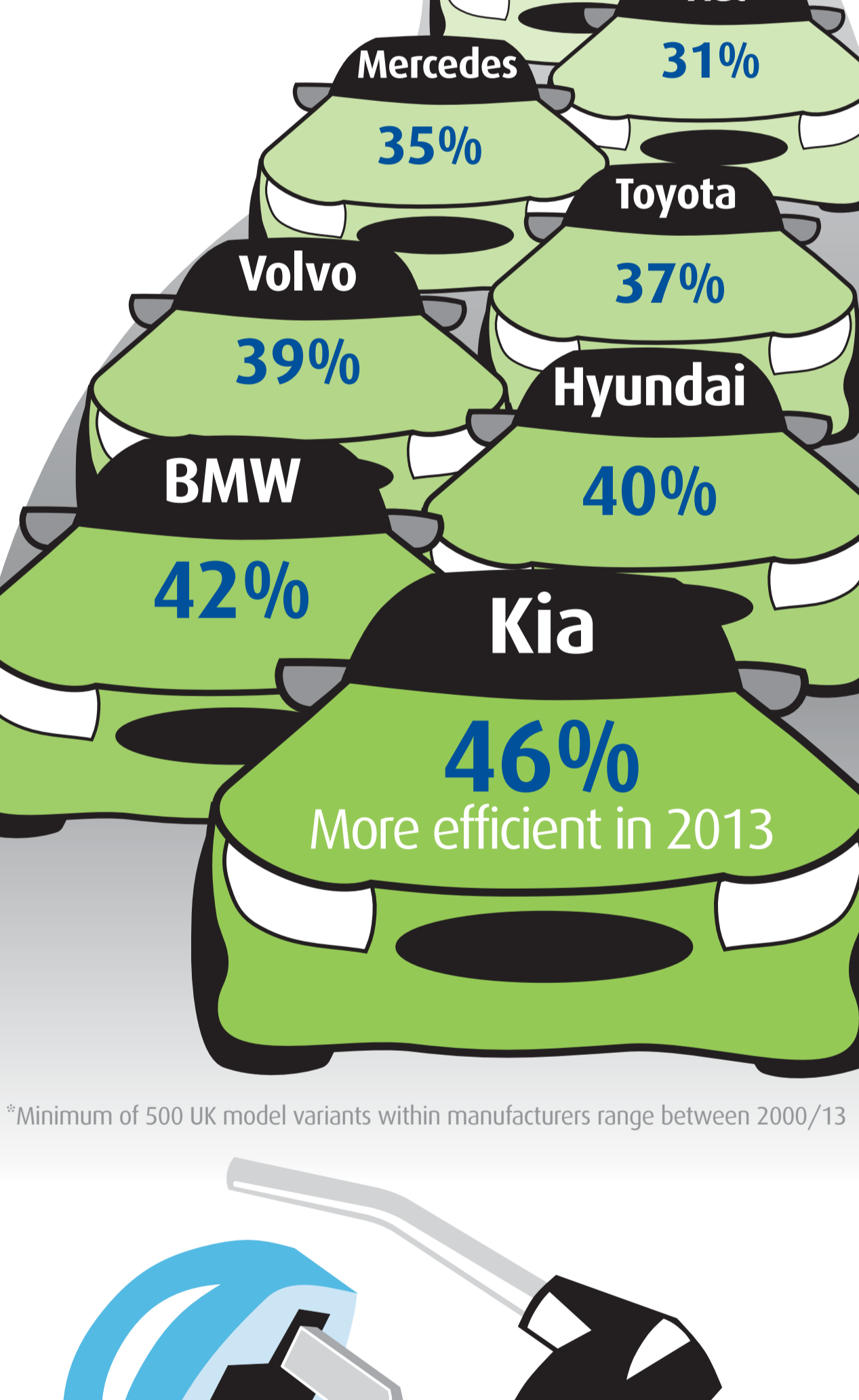
## Top ten manufacturers by most fuel efficient models\*

Average running cost across range 2000/13 - 12,000 miles PA



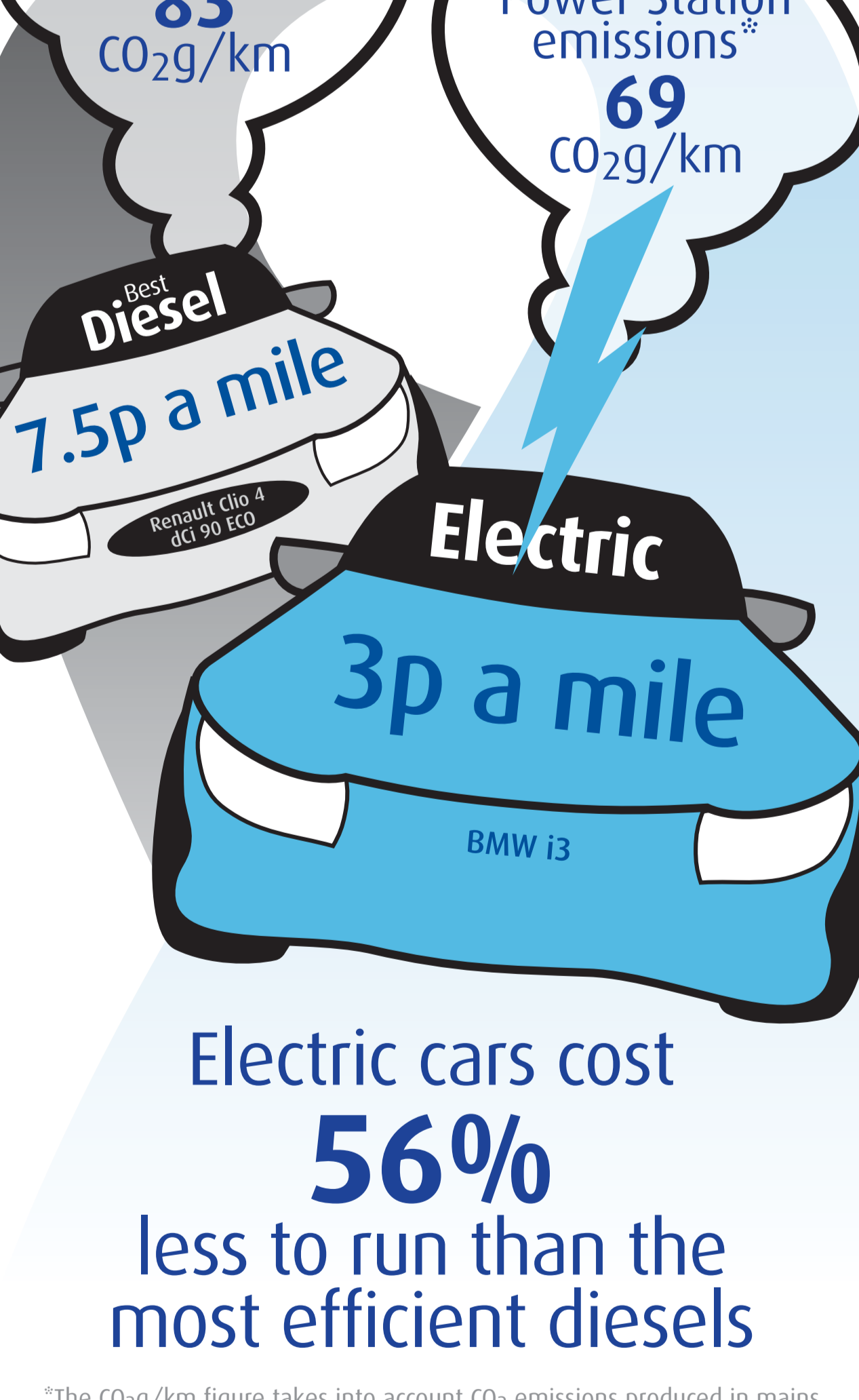
## Most improved brands across model ranges\*

(% more efficient than 2000)



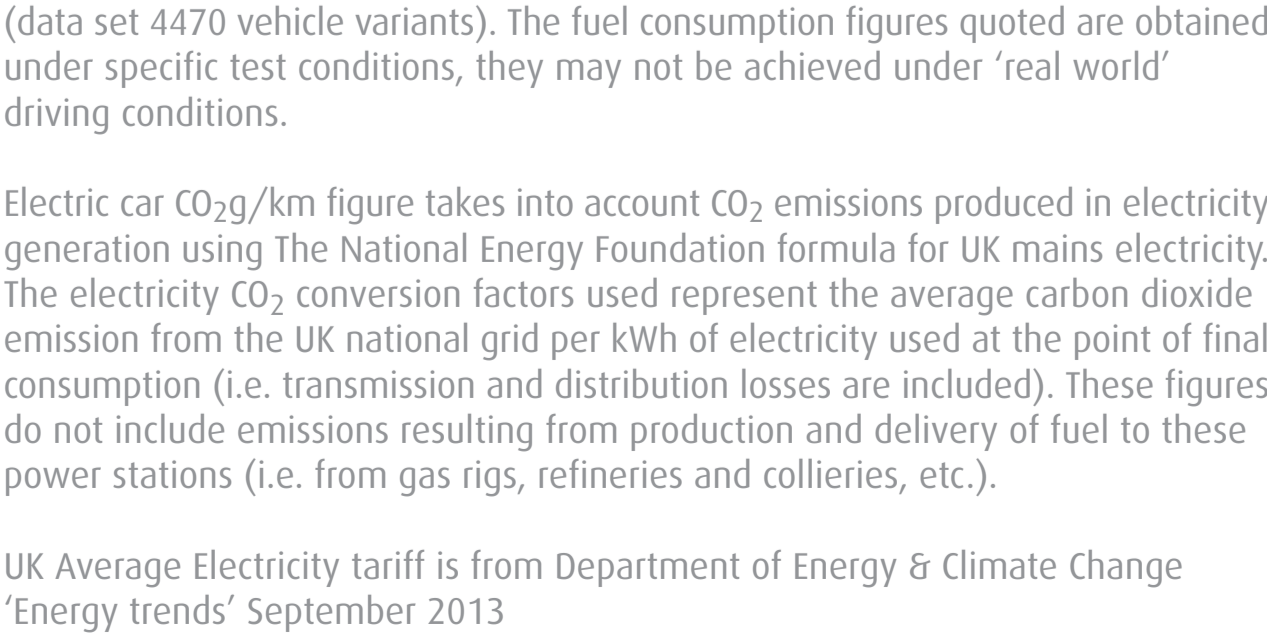
\*Minimum of 500 UK model variants within manufacturers range between 2000/13

## Pump v Plug



Electric cars cost **56%** less to run than the most efficient diesels

\*The CO<sub>2</sub>g/km figure takes into account CO<sub>2</sub> emissions produced in mains electricity generation



Notes / Sources:  
 Fuel economy/CO<sub>2</sub> figures are from the Vehicle Certification Agency 2000 to 2013 (data set 4470 vehicle variants). The fuel consumption figures quoted are obtained under specific test conditions, they may not be achieved under 'real world' driving conditions.  
 Electric car CO<sub>2</sub>g/km figure takes into account CO<sub>2</sub> emissions produced in electricity generation using The National Energy Foundation formula for UK mains electricity. The electricity CO<sub>2</sub> conversion factors used represent the average carbon dioxide emission from the UK national grid per kWh of electricity used at the point of final consumption (i.e. transmission and distribution losses are included). These figures do not include emissions resulting from production and delivery of fuel to these power stations (i.e. from gas rigs, refineries and collieries, etc.).  
 UK Average Electricity tariff is from Department of Energy & Climate Change 'Energy trends' September 2013  
 Energy costs are calculated at 14.50 pence/kWh electricity, diesel price of 145 pence/litre, petrol 138 pence/litre.  
 Annual mileage is set at 12,000 miles/year.  
 Historical fuel prices: UK Parliament - briefing-papers SN/SG/4712 September 2013

www.sust-it.net

This work by Sust-it is licensed under a Creative Commons Attribution