

# *The* Hurst Herringbone Collection

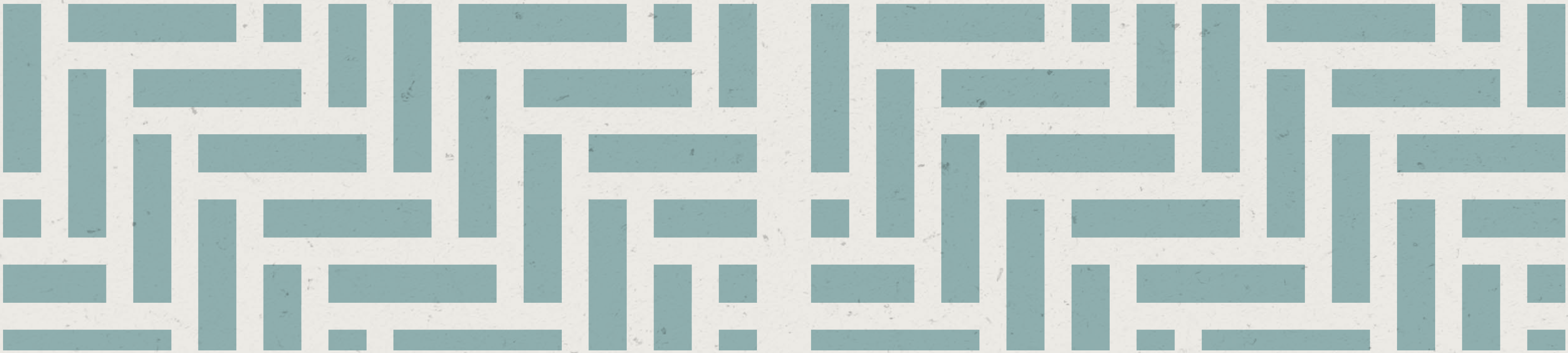
HARVEY MARIA®





Creating a  
*modern luxe* feel  
for super stylish  
kitchens and  
open plan living

---



# Hurst Herringbone

Welcome to a stylish new authentic wood collection from Harvey Maria. Inspired by traditional timber parquet flooring, with its historical and luxurious provenance, the unique size of these petite planks has been carefully designed so they can be easily laid in a classic herringbone pattern.

This brand new collection creates a modern luxe feel in both contemporary and traditional

homes, and really reflects trending kitchen designs. Featuring ultra-realistic wood grain textures, these tactile luxury vinyl floor tiles look and feel like real wood, but are massively practical, durable and sustainable. The collection offers six designs to complement all interior styles - from rustic Torn Bracken, elegant Earl Grey to a more traditional Old Bramble.



## Conscious Design

We are really proud that the MSeries collection is recognised for its low impact on the environment. Certified as exceeding the Eurofins Indoor Air Quality Gold Standard. This means that your indoor environment is safe and healthy for you, your children and your pets. Harvey Maria floors are incredibly durable and easy to maintain. They are completely waterproof, slip resistant and compatible with underfloor heating.

# *Dormouse*

A classic mid oak tone with golden highlights. This colourway is truly versatile and provides warmth to kitchens and open plan living spaces.

---





## *Earl Grey*

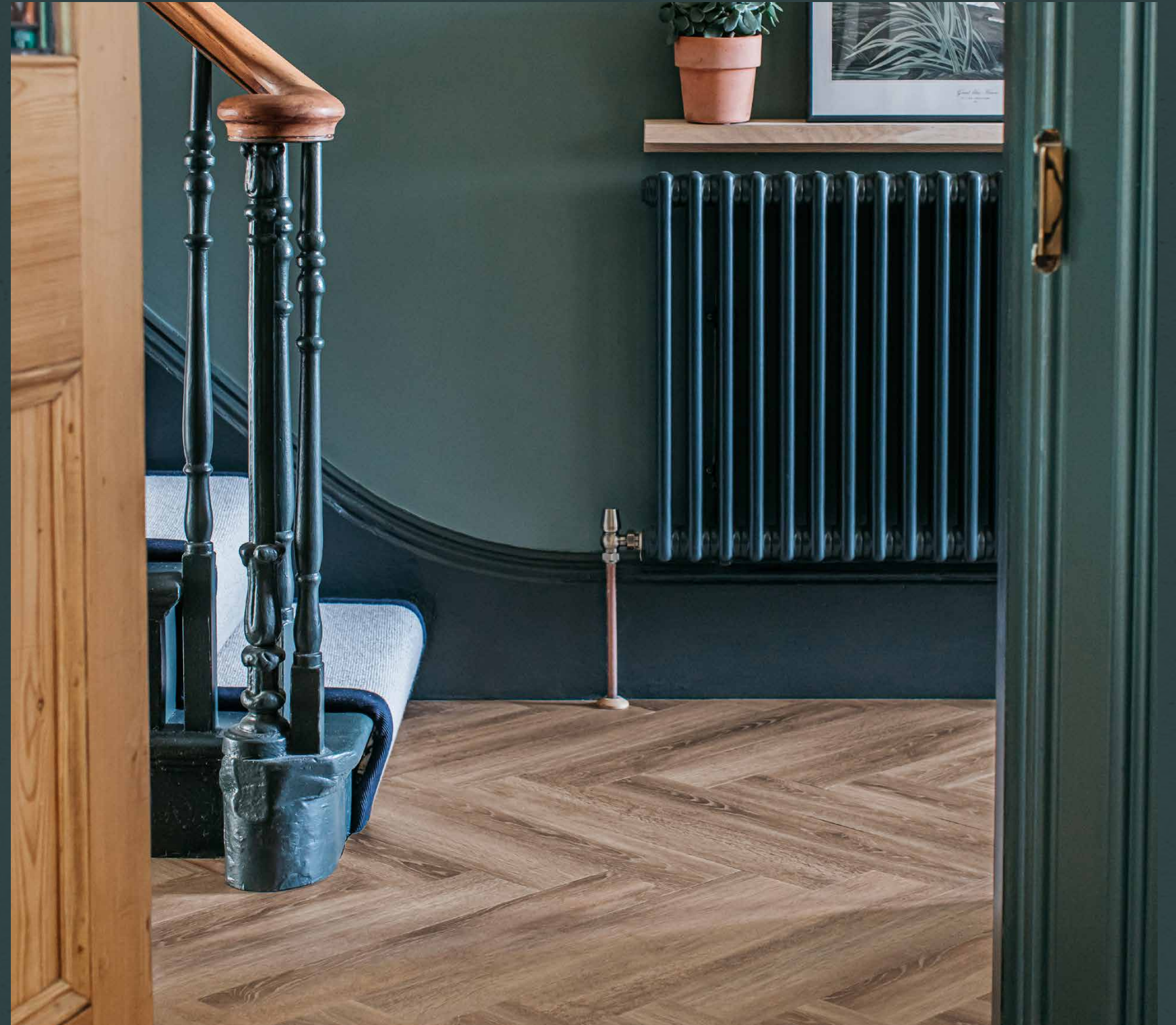
Pale, interesting and very British. Elegant and contemporary, this smoky grey tone creates a lighter space which is very modern.

---

# *Old Bramble*

Bringing traditional warmth and a homely style to hallways, living areas and bathrooms.

---





# *Torn Bracken*

Rustic oak hues create  
a cosy yet contemporary  
feeling in both modern  
homes and period  
properties.

---

## Press Office

For high res images, full tile samples  
and further information please contact

*Lucy Tunstall*

**E: [lucy@harveymaria.com](mailto:lucy@harveymaria.com)**

**T: 0330 330 1231 or 07986 460730**

---

### Spec

11.43cm x 60.96cm x 2.5mm

**Wear layer:** 0.55mm

**Bevelled edge:** Yes

**Surface:** Standard Emboss

Suitable for commercial & domestic use  
including bathrooms, kitchens & hallways.

